

# KB180984552: Automation Engine - Imaging Engine ticket: Public parameters lost logical link

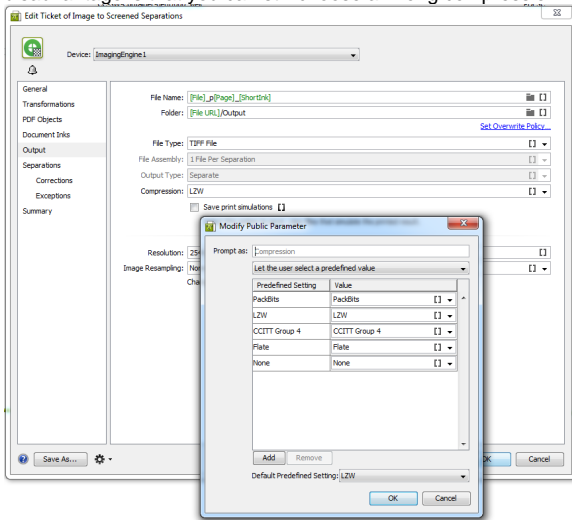
## Summary

In the Imaging Engine ticket **Image to screened separation**, in case you want to define public parameters for **File Type** (TIFF, PDF, LEN) and **Compression**. But when submitting the workflow, the link of the File Type and its compression are lost (e.g.: when you choose LEN output, you see the compression method for the TIFF and not for LEN). If you choose a wrong combination, the task will give errors.

## Solution

### Method 1:

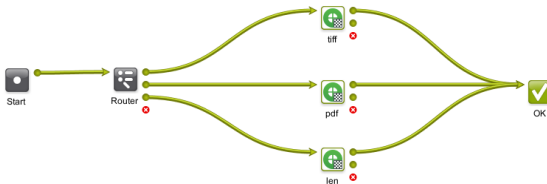
The easy solution is, when you define the public parameters you can also define its value (via right click **Modify Public Parameters...**). This way you will be able to see all compression methods. But the **disadvantage is that you can still choose a wrong compression**.



### Method 2:

The second method involves more complicated setup, but you can avoid choosing a wrong compression method.

1. Define a small workflow, see below example, and make a workflow parameter for File Type, Router based on the **wEP** file type.

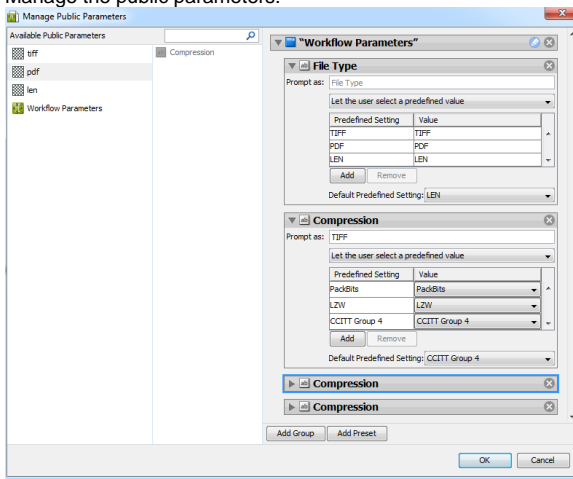


Article information	
Applies to	Automation Engine 16.x Imaging Engine 16.x
Created	04-Jul-16
Last revised	
Author	WEIC
Case Number	

## Contents

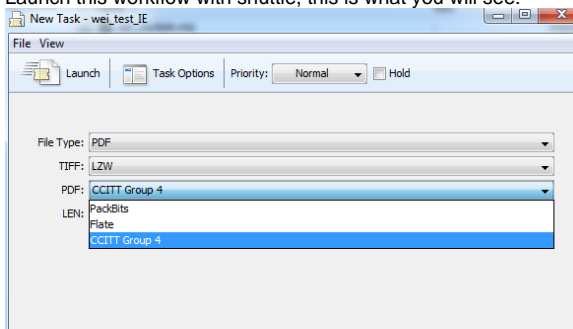
- [Summary](#)
- [Solution](#)
  - [Method 1:](#)
  - [Method 2:](#)

2. Manage the public parameters:



3. Save the ticket as public ticket.

4. Launch this workflow with shuttle, this is what you will see:



So for each output file type, you can only choose the compression method for that specific file type.

5. You can download this ticket for trying: [wei\\_test\\_IE.zip](#)