

KB85659082: Plato - Loading CAD-X plugin fails with the message: "Defaults do not exist"

Summary

Opening a CAD design in Plato fails when the CAD-X is loading. The error message claims that there are no defaults available or the defaults do not exist.



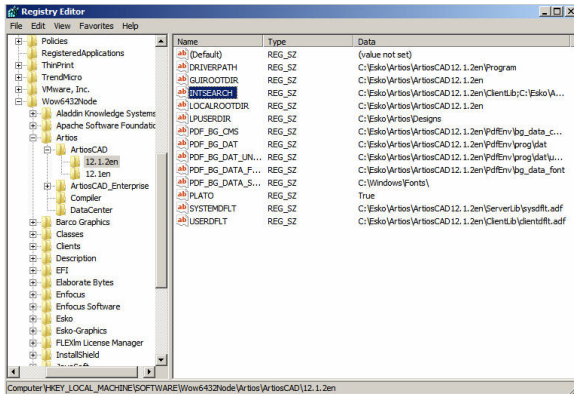
Solution

When CAD-X is loading, it is trying to find a specific file called `sysdef1t.adf`. This file controls the default CAD-X settings. This file is typically stored in either of the following location:

- C:\Esko\Artios\ArtiosCAD\ServerLib
- C:\Esko\Artios\ArtiosCAD12.xx\ServerLib

If the path does not exist, install CAD-X again and make sure it is created.

If the path exist, check the registry value whether it is pointing to the correct directory. To check, go to the **Start** menu and type `regedit` in the search field to run `regedit.exe`



Browse the registry key **HKEY_LOCAL_MACHINE\SOFTWARE\Wow6432Node\Artios\ArtiosCAD\12.xx\XINTSEARCH** and make sure that the string value contains the path mentioned above.



Please note that adding string values to the existing registry key will not harm your system. However, keep in mind that deleting what is already added to the registry key may cause system crash. Hence avoid deleting what is already there.

Article information	
Applies to	Plato CAD-X
Created	21-Mar-14
Last revised	
Author	GASO
CW Number	212321

Contents

- [Summary](#)
- [Solution](#)