

# KB202409219: Automation Engine - How to setup Email configuration to use Office 365 as SMTP mail server

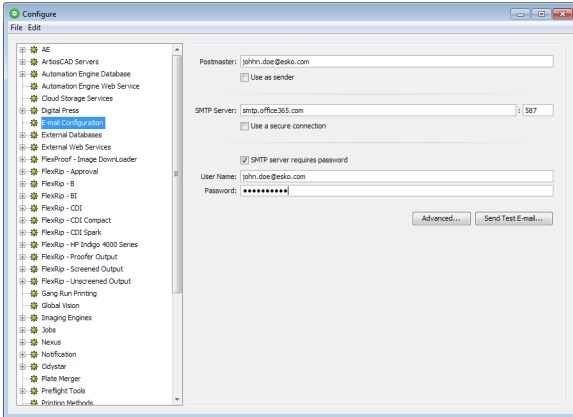
## Description

How to setup Email configuration in Automation Engine to use Office 365 as SMTP mail server.

## Procedure

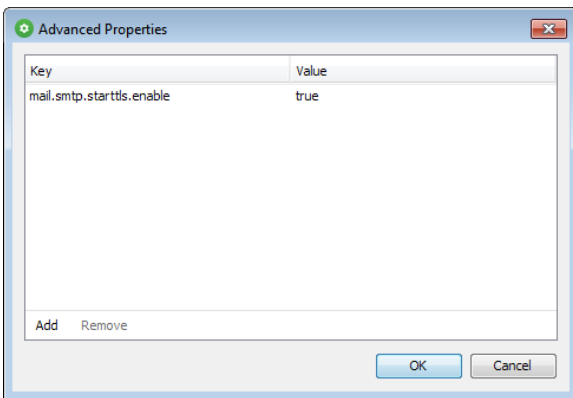
Follow the steps given below:

1. Log in to Automation Engine Pilot with user who has Administrator privileges.
2. Navigate to **Tools > Configure > E-mail Configuration**.
3. Enter "[smtp.office365.com](https://smtp.office365.com)" in **SMTP Server** with the **Port** set to **587**.



4. **Use a secure connection** should be disabled.
5. Enable **SMTP server requires password** and enter a valid Email username and password.
6. Click **Advanced...**
7. In the **Advanced Properties** window, add the following new entry:

```
Key = mail.smtp.starttls.enable  
Value = true
```



With these settings, Automation Engine will only be able to send E-mails where the "From" E-mail address is what you have set in the "User Name" field. If you want Automation Engine to be able to send E-mails from other E-mail addresses (i.e. using the "Send E-mail" task), then the E-mail address set in the "User Name" field has to be given "Send as" and "Send on behalf" privileges for each of the other E-mail addresses. Refer to the following link for information on how to do that:

<https://support.office.com/en-us/article/give-mailbox-permissions-to-another-user-in-office-365-admin-help-1dbc12f-a9de-4d1d-b0b3-a227f8a736d8>

Article information	
Applies to	Automation Engine 16.1 and newer
Created	23-Mar-18
Last revised	
Author	APRE
Case Number	

Contents
<ul style="list-style-type: none"><li>• <a href="#">Description</a></li><li>• <a href="#">Procedure</a></li></ul>

