

# KB73059234: Automation Engine - Cannot find the ticket Calculate Ink Key Settings (InkPlanner)

## Summary

Cannot find the ticket **Calculate Ink Key Settings** (InkPlanner) to generate a CIP3 file in Automation Engine Pilot.

## Solution

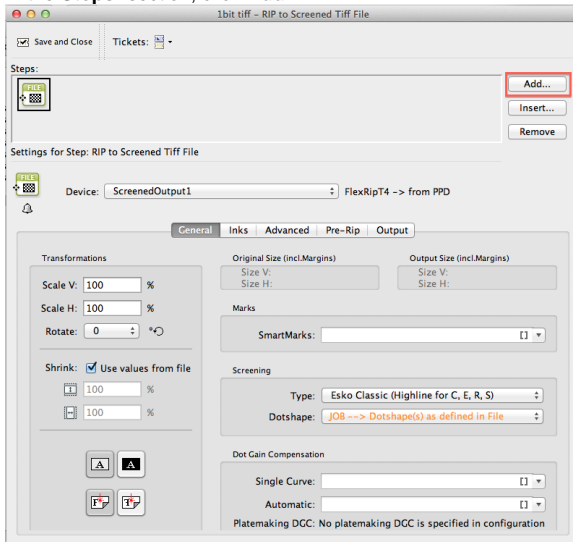
The ticket **Calculate Ink Key Settings** cannot be launched separately. It can only be launched as a chained task to any ripping ticket.

Before we proceed, check if the licenses for the below mentioned modules have been activated on the FlexRip and Automation Engine Server respectively:

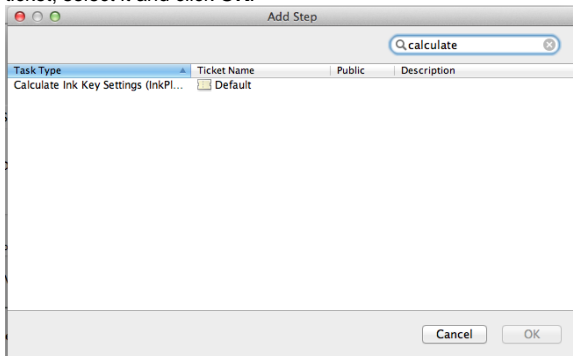
- FlexRip : FlexRip InkPlanner
- Automation Engine : Automation Engine InkPlanner task

If the licenses for the above mentioned modules are present in the license manager, proceed as follows:

1. Open the Automation Engine Pilot.
2. Go to the **Tickets** view and search for your ripping ticket.
3. Once you find your ripping ticket, make a copy of it by right clicking on the ticket > **Copy** > **Paste** > provide a new name and click **Save**. This is to avoid any sort of changes to your original ripping ticket.
4. Double click the ticket you just created.
5. In the **Steps**: section, click **Add...**



6. In the resulting **Add Step** window, search for **Calculate Ink Key Settings**. When you find the ticket, select it and click **OK**.



7. Configure the ticket according to your requirement and save the ticket (can also be configured in the workflow editor).

Now, this ticket can be found in the **Ticket Browser** and can be used in the workflow.

Article information	
Applies to	Automation Engine all versions
Created	21-May-13
Last revised	
Author	MASI
CW Number	162765

## Contents

- [Summary](#)
- [Solution](#)
- [More Information](#)

## More Information

For more information, visit:

[http://help.esko.com/docs/en-us/automationengine/12/referenceguide/home.html?q=en-us/common/ae/reference/re\\_ae\\_inkplanner.html](http://help.esko.com/docs/en-us/automationengine/12/referenceguide/home.html?q=en-us/common/ae/reference/re_ae_inkplanner.html).