

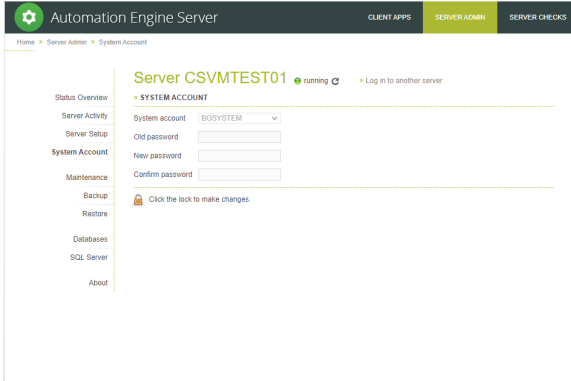
KB289706777: Automation Engine - How to configure backup to a remote computer

Description

How to configure Automation Engine backup to a remote computer/file server?

Procedure

1. Open **Server Admin**.
2. Open **System Account** tab.

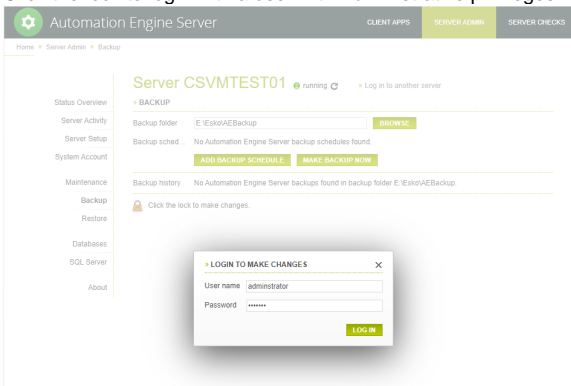


3. Make a Share on the remote computer with full access rights for the user configured for the **System account**.



Can be a local user or a domain user!

4. Open the **Backup** tab.
5. Click the lock to login with a user with Administrative privileges.



6. Enter the UNC path in the **Backup folder** and click **Apply**.



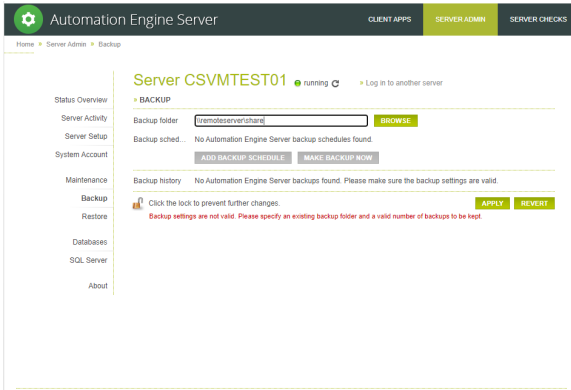
Browsing is not possible on network shares!

Article information

Applies to	Automation Engine all versions
Created	25 Jun 2020
Last revised	
Author	HG
Problemlog Number	01300639

Contents

- [Description](#)
- [Procedure](#)

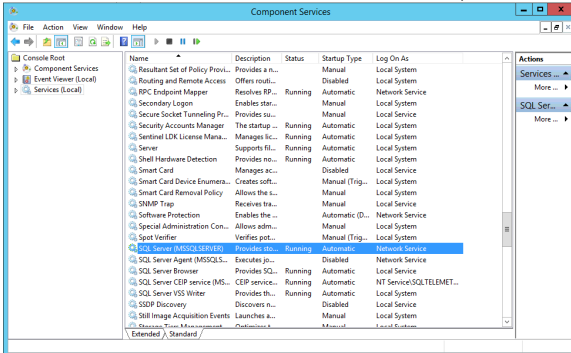


7. Click **MAKE BACKUP NOW**.
8. Check if files are written in the remote share.

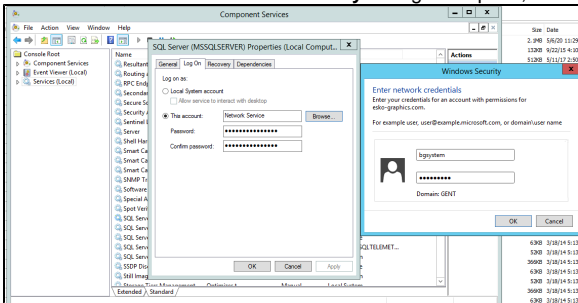


To enable SQL backup on a network Share, the SQL Server Instance must be running with the System Account!

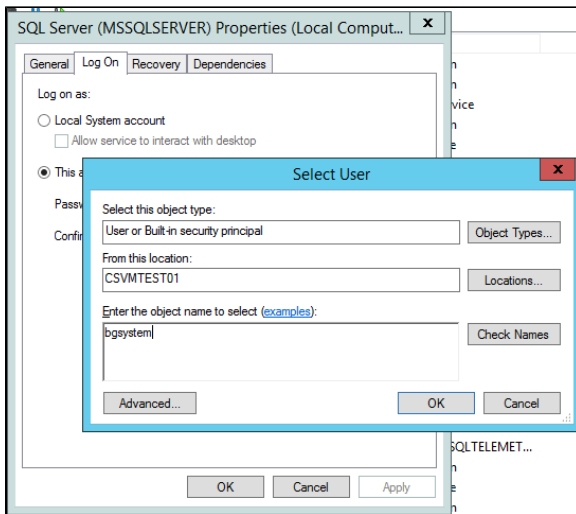
9. Go to **Services** and select the SQL Server instance, default is **MSSQLSERVER**.



10. Go to the **Log On** tab and set the user to System Account user.
11. Click **Browse**. In the **Windows Security** dialog that opens, enter the user credentials.

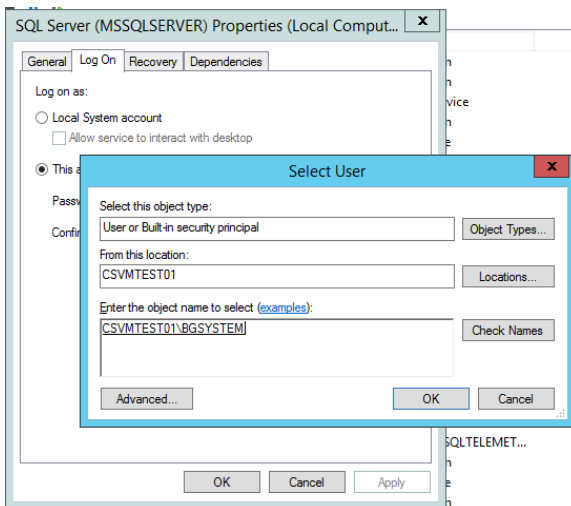


12.

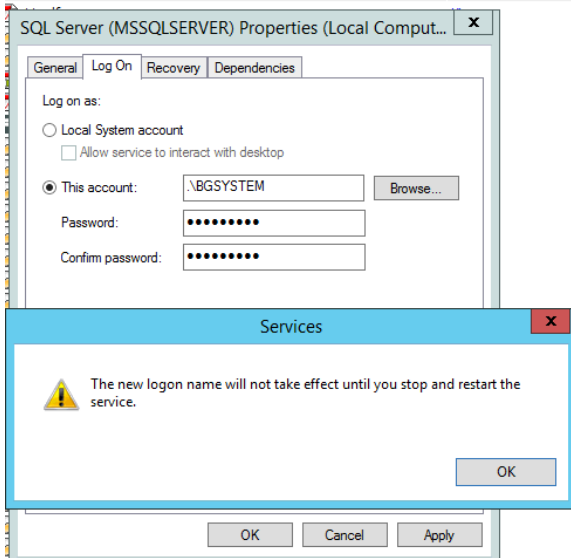
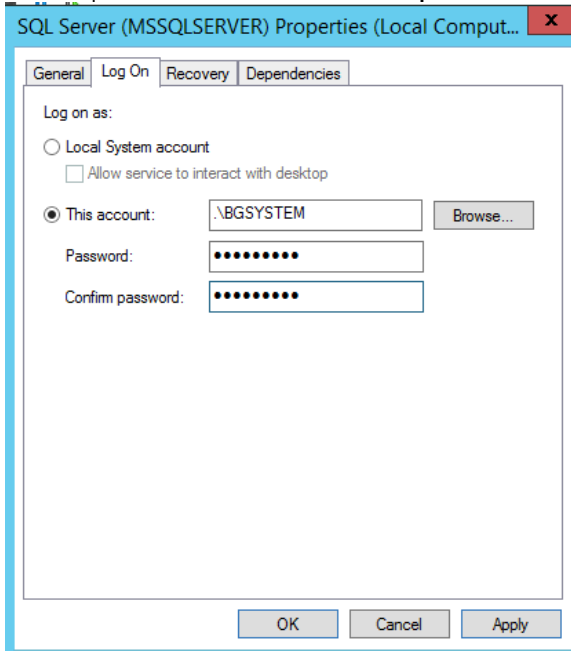


13. In the **From this location** field, enter the local computer name if the local System account is used or the domain name if a domain user is used.

14. Click **Check Names**.



15. Enter the password in the **Password/Confirm password** field.



16. Click **OK**.
17. Reboot server. Or,
- Stop the Automation Engine.
 - Stop the SQL Server instance.
 - Start the SQL Server instance.
 - Start the Automation Engine.
18. Make a backup of Configuration, Resources and Databases.
19. Check on the file server, if the database backup files are made.